



ROSWELL [inc]

2025 Impact Report



Hillrose Market Rendering

Table of Contents

- About Roswell Inc 1
 - Our Team 2
- Message from Our Leadership 5
 - Board of Directors 7
 - Year in Review 9
 - 2025 BY THE NUMBERS
 - BUSINESS CONCIERGE SERVICES
- Roswell at a Glance 15
 - RETAIL MARKET OVERVIEW
 - 2025 CONSUMER TRAFFIC DATA
 - OFFICE MARKET OVERVIEW
 - RESTAURANT INDUSTRY
 - AUTOMOTIVE INDUSTRY
- Featured Projects 27
 - BUSINESS ATTRACTION & RECRUITMENT
 - Southern Post
 - PBS Aerospace
 - Rivian
 - Tipsy Thaiger
 - You42 Studios
 - Hillrose Market
 - RETENTION & EXPANSION
 - Gate City
 - La Quinta Roswell
 - High Meadows School
- Industry Support 49
 - 2025 ROSWELL RESTAURANT WEEKS
 - 2025 SUMMER SIPPIN' ROSWELL
 - ECONOMIC DEVELOPMENT FORECAST,
 - BROKERS LUNCH & SITE SELECTION TOOLS
 - ROSWELL INC NONPROFIT LEADERSHIP ACADEMY
 - ROSWELL BREW TALKS
- Partners 59
 - COMMUNITY & REGIONAL PARTNERS
 - ECONOMIC DEVELOPMENT ALLIANCE
 - INVESTORS
 - EXCELLENCE IN ECONOMIC DEVELOPMENT

ABOUT ROSWELL INC

In partnership with the City of Roswell since 2012, Roswell Inc serves as the Accredited Economic Development Organization (AEDO), unifying local government, the business community, and key stakeholders. We exist to cultivate a thriving and resilient economy by transforming strategic collaboration into tangible results.

We support businesses at every stage of their journey—from solo entrepreneurs and small businesses to regional and national headquarters. Our work is driven by action: providing essential resources, recruiting new businesses and entrepreneurs, and forging partnerships that bring the city’s economic vision to life.



KEY SERVICES



ATTRACTION & RECRUITMENT



INDUSTRY SUPPORT & PROMOTION



NAVIGATING LICENSING & PERMITS



RIBBON CUTTING COORDINATION



BUSINESS RETENTION & EXPANSION



BUSINESS DEVELOPMENT

OUR TEAM



STEVE STROUD
PRESIDENT & CEO

Direct: 404.372.0338
Email: steve@roswellinc.org



ASHLEY ALLEN
VP OF OPERATIONS & ECONOMIC DEVELOPMENT

Direct: 256.658.0168
Email: ashley@roswellinc.org



SHANNON HARRISON
BUSINESS DEVELOPMENT MANAGER

Direct: 334.790.3509
Email: shannon@roswellinc.org



BROOKE FOXMAN
EVENTS & PROGRAMS SPECIALIST

Direct: 770.769.7810
Email: brooke@roswellinc.org

2023



**IT WAS A YEAR
THAT REDEFINED
WHAT'S POSSIBLE
FOR ROSWELL**

When we set out to write this year's Impact Report, we knew 2025 had been special. But as we gathered the stories, the data, and the accolades, one thing became clear: this wasn't just a year of progress for our organization. It was a year that redefined what's possible for Roswell.

This year, Roswell Inc achieved something no other economic development organization (EDO) in Georgia ever has. We were honored by the International Economic Development Council (IEDC) with the prestigious EDO of the Year Award—a testament to the innovative and impactful work happening right here in our community. In total, we brought home four IEDC Excellence in Economic Development Awards, making Roswell Inc the most-awarded organization in Georgia for 2025. This national validation is a reflection of our collective commitment to building a city that works for everyone, and we are deeply grateful for the proclamations from the City of Roswell and Fulton County recognizing this historic achievement.

Economic development isn't just about numbers on a spreadsheet; it's about the vibrancy of our downtown, the new "For Lease" signs that become "Grand Opening" banners, and the creation of quality jobs for our neighbors. This year, our team had the privilege of working with over 350 businesses to turn their visions into reality. We provided expert guidance on everything from navigating licensing to planning and zoning, directly supporting the launch or expansion of 103 new companies that are contributing to Roswell's unique character and vitality.

This includes the opening of new dining experiences like Topsy Thaiger & Truth Be Told, the arrival of beloved retail concepts like Pinkertons and the start of construction on Hillrose Market, a highly anticipated mixed-use development that will soon bring even more energy to our community. We are also proud to have attracted global industry leaders like PBS Aerospace and Kuros Biosciences, both of which chose Roswell for their US headquarters, bringing international innovation and high-quality jobs to our city.

Beyond the wins you can see, we have been hard at work building the foundation for sustained success. We played a key role in shaping the City of Roswell's economic development strategy, ensuring our goals are aligned and our vision is shared. Every conversation, every site visit, and every new program we launch is designed with one goal in mind: to foster a thriving business community that makes Roswell a truly exceptional place to live, work, and gather.

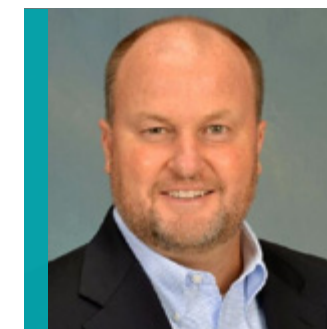
As we look to 2026 and beyond, we are filled with excitement and optimism. The momentum we have built together is undeniable, and we remain steadfast in our commitment to driving economic prosperity for all of Roswell. It is our honor to present this report. The successes within these pages are not ours alone—they belong to every business owner, partner, and resident who believes in this city. Thank you for being an essential part of Roswell's story.

With gratitude and anticipation,



**STEVE
STROUD**

President & CEO
Roswell Inc



**JOHN
ASBELL**

Board President Roswell
Economic Development &
Tourism, Inc., 2023-2025
Area Manager,
Georgia Power

Roswell Economic Development and Tourism, Inc. is the 34-year-old nonprofit that oversees both Roswell Inc, the city's economic and business development program, and Visit Roswell, the city's tourism program.

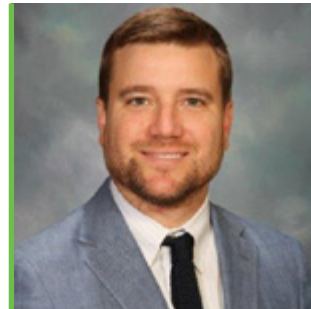
2026 EXECUTIVE COMMITTEE



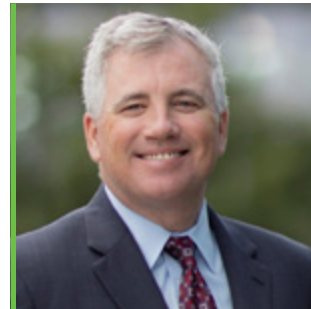
Jon-Paul Croom
Board Chairman
DT Spade



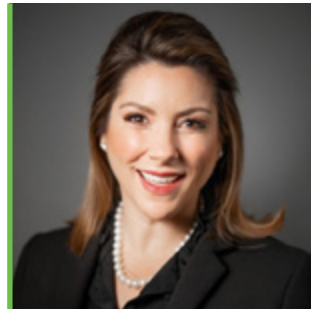
Dave Schmit
Board President
Schmit & Associates



Michael Curling
Vice President
New Kent Capital



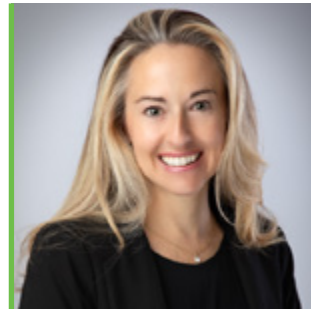
Allen Barker
Treasurer
Pinnacle-Synovus



Callie Andrews
Wellstar North Fulton
Medical Center



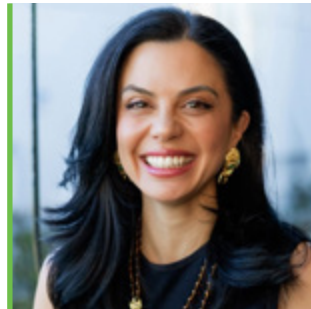
Ron Buckley
Brixmor Property
Group



Stacy Lathrop
SmartMed Drive
Thru



Natasha Rice
Chattahoochee
Nature Center



Andrea Sieber
Georgia Power



Branch Sinkule
Kimberly-Clark



Monica Smith
MRS Consulting

2026 BOARD OF DIRECTORS



Samir Abdullahi
Select Fulton



Mary Atchley
Walk Your Plans/
Design & Build XR



Tod Baker
Carl Black Roswell



Allen Barnhart
Clean Plate
Restaurants



Greg Chapin
Equus Partners



Bob Clarkson
Century 21
Connect Realty



Erin Durham
PBS Aerospace



Logan Elliot
CLS



Joseph Fawole
True North
Companies



Chris Hardman
Georgia Hotel &
Lodging Association



Danielle Holcomb
Vestis



William Lindsey
LGM CPA



Rob Mimms
Mimms Enterprises



Davis Myers
Choate
Construction



Gary Nichols
InterDev



Alex Paulson
Randall-Paulson
Architects



Stephen Polhill
DSM Real Estate



Betty Price
Roswell History
Museum



Kamden Robb
Gas South



Natalie Sakar
LGE Community
Credit Union



Steve Siders
Forum Financial



Lisa Stevens
From the Earth/
Bask Steakhouse



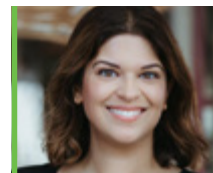
Jim Tardif
Signs of
Significance



Lisa Tilt
Full Tilt Consulting



Rena Youngblood
Mimms Museum of
Technology & Art



Sarah Beeson
City of Roswell Council Member,
Economic Development Liaison, Ex-Officio

PRESIDENT & CEO



Andy Williams
President & CEO
Visit Roswell



Steve Stroud
President & CEO
Roswell Inc



YEAR

IN

REVIEW

2025





Attraction & Recruitment

63 supported 27 completed 37 ongoing



Retention & Expansion

46 supported 15 completed 27 ongoing



37 Total Number of Events (in-person & virtual)

4,100+ attendees



352 Total Supported Businesses

At Roswell Inc, we provide business concierge services to streamline your operations and help you navigate complex processes with ease. We help new businesses seamlessly integrate into the local economy by connecting them with essential resources, such as business support organizations (like SBDC and SCORE), lending programs, local contractors, signage companies and more. Our goal is to ensure you have the tools and partnerships needed to thrive from day one.

We also help guide you through the permitting & licensing process with the city, county, or state government, support pre-application and zoning meetings and help you navigate issues with private entities like utility services or site selection. We act as your trusted partner, saving you time and reducing stress.

Our goal is to ensure your business runs smoothly, so you can focus on getting open, growing and being successful. Let us handle the details—we're here to support you every step of the way.



967 Coffee Co.



CA South



Truth Be Told



Silla Del Toro



Sushi Yoko



Confetti Clubhouse



Pinkerton's Baby & Kids

47 Navigating Issues with Private Entities
Utilities, Site Selection, Property Owner, etc.

43 Permitting & Licensing

29 Planning & Zoning Support

267 **CONNECTING**
to Resources & Referrals

386
TOTAL
PROJECTS

ROSWELL [inc]

ROSWELL AT A GLANCE

Retail Market Overview

Source: CoStar, Georgia Power (2025)

ROSWELL AT A GLANCE



8.29 million
square feet of inventory

\$63 million
retail sales volume

5.6%
vacancy rate

366,000 SF
available space

10.4 months
on market



\$263/SF
average sale price

\$23.89/SF
average rent



Roswell Corners



Roswell Village



Canton Street District



From the Earth Brewing | Connexion



Southern Post | 40,000 SF Retail



Sky Zone | Kings Market

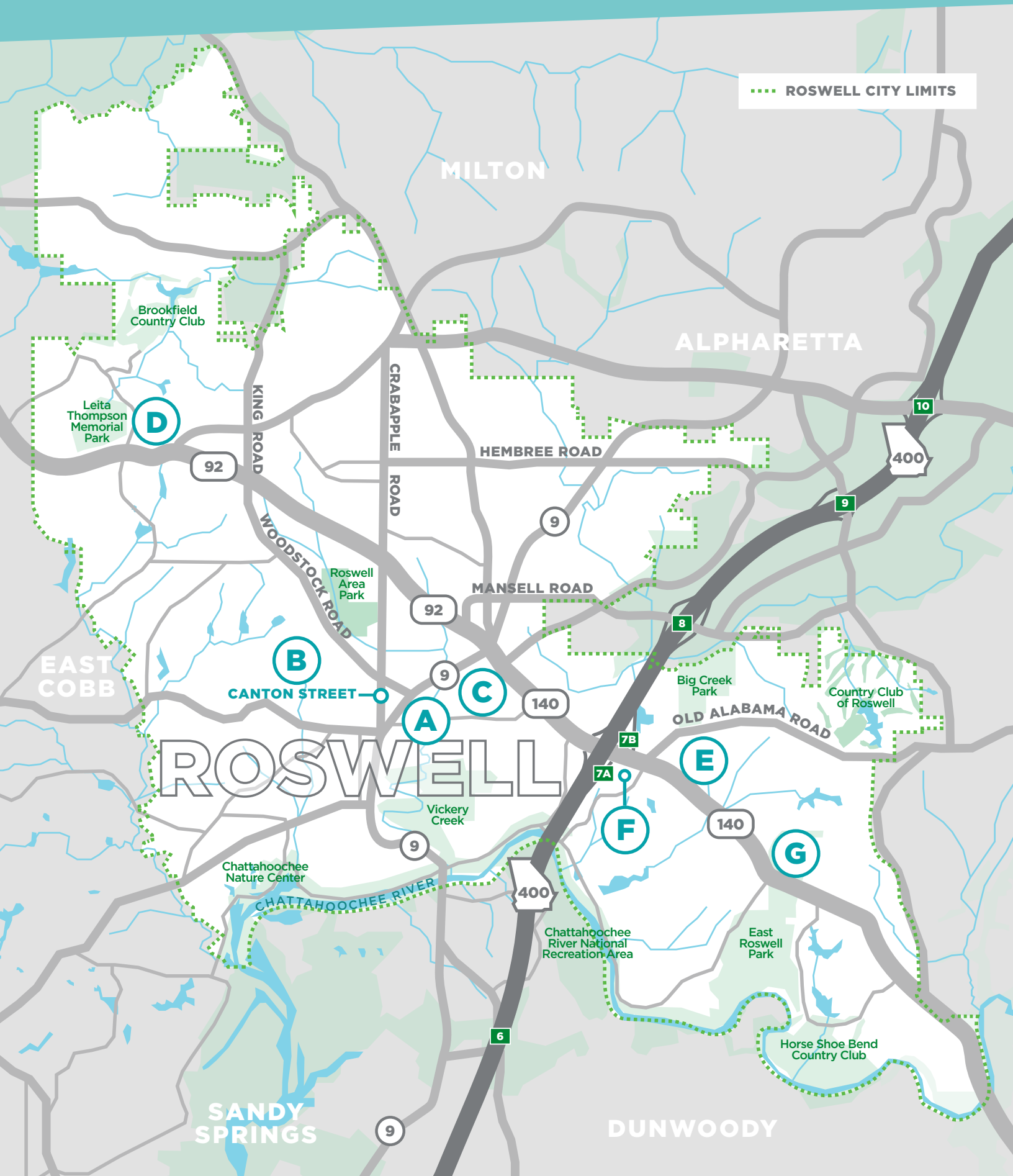


Centennial Village

2025 Consumer Traffic Data

Source: Placer.ai (2025)

ROSWELL AT A GLANCE



A	SOUTHERN POST	1055 Alpharetta Highway, Roswell, GA 30075			
		2025	2024	2019	MEDIAN LENGTH OF STAY
	VISITS	356.8K	68.9K	209.7K	70 Minutes
	VISITORS	137.8K	27.3K	33.6K	19 Minutes (2019)

B	CANTON STREET DISTRICT	Canton Street, Roswell, GA 30075			
		2025	2024	2019	MEDIAN LENGTH OF STAY
	VISITS	2.9M	2.8M	2.7M	93 Minutes
	VISITORS	945.8K	944.5K	882.4K	

C	ROSWELL VILLAGE	593-665 Holcomb Bridge Road, Roswell, GA 30076			
		2025	2024	2019	MEDIAN LENGTH OF STAY
	VISITS	2.2M	2.2M	703.7K	29 Minutes
	VISITORS	316K	319K	188.3K	

D	ROSWELL CORNERS	1125 Woodstock Road, Roswell, GA 30075			
		2025	2024	2019	MEDIAN LENGTH OF STAY
	VISITS	3.6M	3.7M	3.7M	23 Minutes
	VISITORS	450.5K	466K	424.3K	

E	CONNEXION	1570 Holcomb Bridge Road, Roswell, GA 30076			
		2025	2024	2019	MEDIAN LENGTH OF STAY
	VISITS	1.5M	1.7M	1.3M	22 Minutes
	VISITORS	304.5K	304.5K	278.5K	

F	KINGS MARKET	1425 Old Alabama Road, Roswell, GA 30076			
		2025	2024	2019	MEDIAN LENGTH OF STAY
	VISITS	2.2M	2.2M	2.2M	17 Minutes
	VISITORS	473K	487.7K	467.9K	

G	CENTENNIAL VILLAGE	2300 Holcomb Bridge Road, Roswell, GA 30076			
		2025	2024	2019	MEDIAN LENGTH OF STAY
	VISITS	1.4M	1.5M	1.8M	14 Minutes
	VISITORS	158.4K	182.5K	205.1K	

Office Market Overview

Source: CoStar, Georgia Power (2025)

ROSWELL AT A GLANCE

608
Number of Buildings

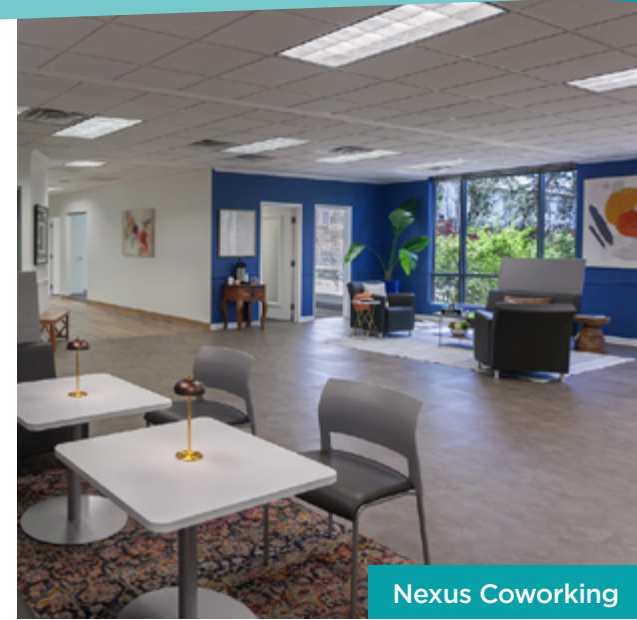
6.64 Million SF
Total Office Space

868K
Available Space

11.3%
Vacancy Rate
North Fulton (21.6%)

\$191
Per Square Foot
Average Sale Price

\$24.47
Per Square Foot
Average Rental Price



Nexus Coworking



Mansell West



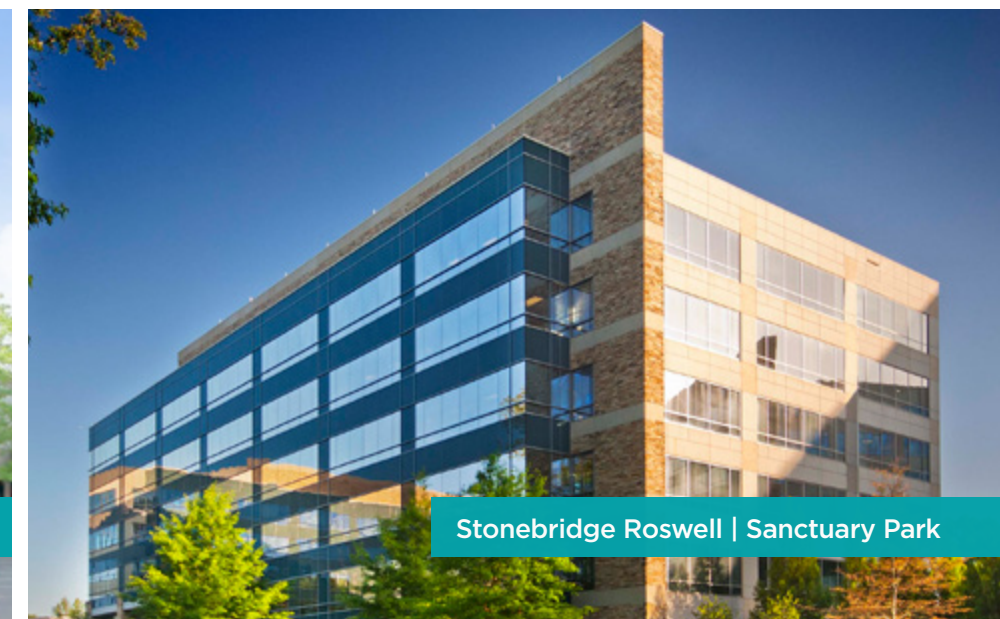
Southern Post | 95,000 SF Office



Mansell Overlook



Northmeadow Business Park



Stonebridge Roswell | Sanctuary Park

Key Tenants





The hospitality industry is a major sector of Roswell's economy, employing over 4,250 individuals and serving as a vital driver of local commerce. With 210 independent, locally-owned, or chef-driven restaurants, alongside 12 craft beverage destinations, the food and beverage sector generates more than \$321 million in annual sales. Roswell Inc actively supports this vibrant industry through innovative programs like Roswell Restaurant Weeks and Summer Sippin', which not only boost foot traffic but also enhance sales, reinforcing the city's reputation as a culinary destination.

\$321 MILLION In Annual Sales

4,250+ JOBS

300+
Total Restaurants

210
Independent, Locally-Owned or Chef-Driven

19
NEW in 2025



\$2.1 BILLION ECONOMIC ENGINE

Roswell’s automotive retail corridor is a long-established pillar of the local economy, tracing its roots back to the city’s first dealership in 1921. Today, with 20+ new car franchises operating within the city limits—the highest concentration in North Fulton—the sector serves as a regional magnet for consumer traffic and high-value sales.

New Car Franchises in Roswell:

Mazda	Nissan	Honda	Maserati	Genesis	Chrysler
Buick	INEOS	Dodge	Acura	Audi	Ram
GMC	Toyota	Jeep	Infiniti	Porsche	
Hummer	Lexus	Ferrari	Hyundai		

Economic Impact at a Glance:

Annual Sales:

Nearly \$2.1B in sales, consistently ranking as Roswell’s top tax revenue generator, contributing over 30% of all tax revenue in 2025.

Employment:

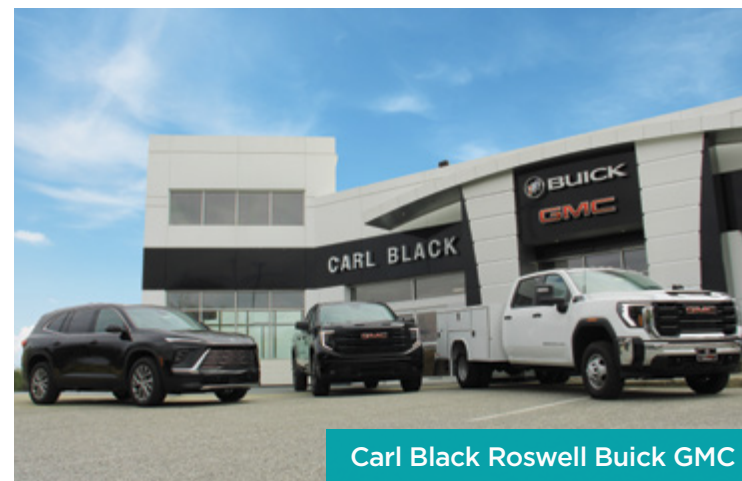
The concentration of luxury and high-volume dealerships provides stable, skilled employment for hundreds of residents and supports a robust ancillary ecosystem of parts suppliers and service providers.

Market Resilience:

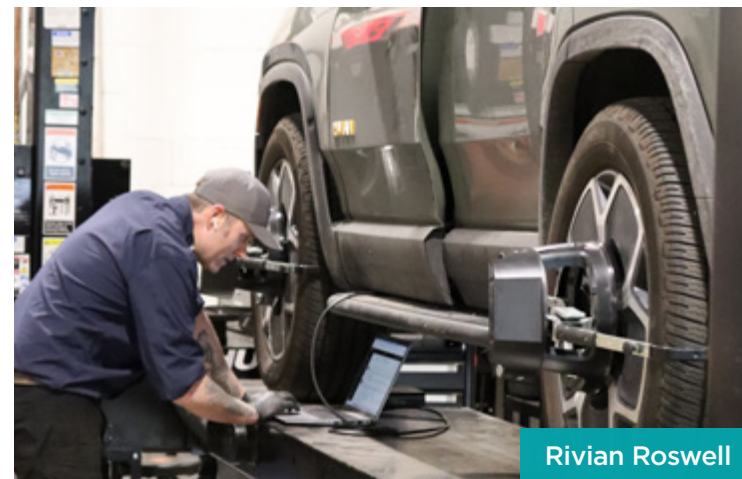
The diversity of the dealer roster—from Regal INEOS Grenadier to Carl Black Roswell Buick GMC and United BMW—insulates the local economy from market fluctuations by capturing a wide spectrum of consumer demand.



Ferrari Roswell



Carl Black Roswell Buick GMC



Rivian Roswell



Regal INEOS

Strategic Positioning & Future Mobility:

Roswell is building on this deep foundation to transition into the next era of transportation. This year, Rivian & Lucid opened Customer Experience and Service Centers in the city, giving residents direct access to the innovative EV brand’s sales and support network. Looking ahead to 2026, Roswell will welcome a brand new dealership offering both fuel and EV options, further diversifying the city’s mobility portfolio. By hosting flagship locations for brands like Ferrari of Atlanta, Rick Case Hyundai and Honda Carland, Roswell offers automotive investors a direct line to Atlanta’s affluent and growing consumer base. This isn’t just a collection of showrooms; it is a carefully curated destination that drives revenue today while paving the way for the mobility jobs of tomorrow.

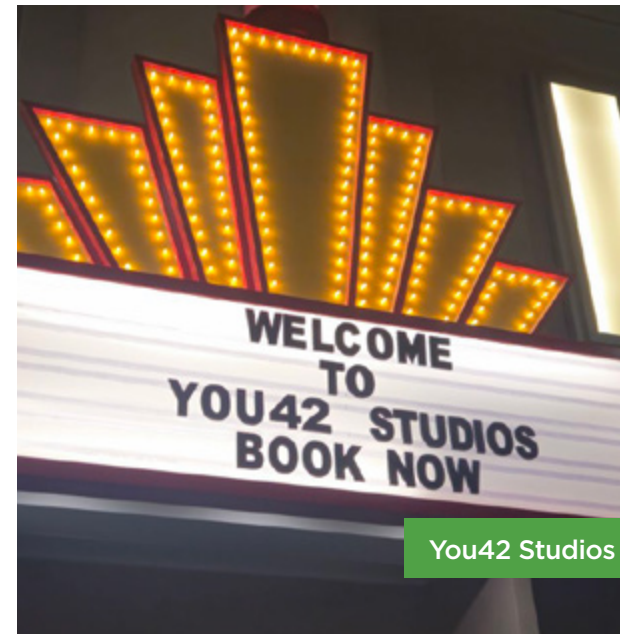


FEATURED PROJECTS

In 2025, Roswell Inc worked to attract a variety of companies across numerous industries through its business attraction & recruitment efforts.

 **Attraction & Recruitment**

63 supported **27** completed **37** ongoing



Southern Post is a premier four-acre mixed-use destination located in the heart of Roswell, Georgia. Developed by AH Realty Trust, the project features a carefully curated blend of 95,000 square feet of loft-style office space and 40,000 square feet of retail offerings. Residential options include the Chandler Residences, which consist of 137 high-end apartments and luxury townhomes designed for a walkable lifestyle. The development is owned by a vertically integrated REIT with over 40 years of experience in creating high-quality real estate across the Southeast. By combining residential comfort with local commerce, the site fosters a vibrant community spirit for both residents and business owners. Ultimately, Southern Post serves as a dynamic hub that provides a unique, enriching experience for the local Roswell community.



WATCH VIDEO



NEW
DEVELOPMENT
DETAILS
**4.28
ACRES**
CAPITAL
INVESTMENT
\$126M
TENANTS
+12



Roswell has truly evolved into a premier destination for elevated lifestyle, food and beverage, and entertainment experiences. At Southern Post, we are proud to both reflect and contribute to that growth by creating a dynamic environment that brings these elements together in a meaningful way. Through our continued partnership with Roswell Inc, we've cultivated a community-driven destination that seamlessly bridges the gap between residents, local businesses, and transient guests—fostering connection, engagement, and a vibrant sense of place.

ADRIANA SICILIANO | COMMUNITY MANAGER, SOUTHERN POST



ROSWELL INC'S
INVOLVEMENT

- Recruitment Project
- Assisted with Permitting Process
- Advisor to Both Tenant & Ownership
- Provided Tenant Referrals

PBS Aerospace is a small jet propulsion manufacturer producing turbojet engines in the United States to support defense and advanced aerospace applications. From their North American headquarters in Roswell, Georgia, they are scaling production of the TJ40 and TJ80 engine lines with a focus on reliability, performance, and manufacturing excellence—delivering consistent capability that customers can depend on when missions matter.

PBS Group brings a long, proud history of engineering and turbine manufacturing in the Czech Republic. Today, PBS Aerospace is building on that legacy by establishing and expanding a U.S.-based production capability in Roswell, Georgia. The mission is straightforward: create a dependable American manufacturing base for small jet propulsion and scale it fast enough to meet real demand.

To do that, PBS Aerospace is investing in people, disciplined processes, and production infrastructure to increase output, strengthen supply resilience, and support customers who need a partner that delivers—consistently and at speed.

FROM 17K SF TO
30K SF

CAPITAL
INVESTMENT
\$37M



PBS AEROSPACE

Roswell gives us the foundation we need to scale: workforce, infrastructure, and leadership that knows how to support high-performance manufacturing. Roswell Inc welcomed us from day one.

COLLEEN DAHER | DIRECTOR OF PROGRAMS, PBS AEROSPACE

When you are scaling quickly, relationships matter. Roswell Inc opened doors that accelerated our rapid expansion right here in Roswell, GA.

HAYES DALEY | BUSINESS DEVELOPMENT MANAGER, PBS AEROSPACE

ROSWELL INC'S INVOLVEMENT

- Recruitment Project
- Provided "White Glove" Permitting Assistance
- Advisor to Both Tenant & Ownership

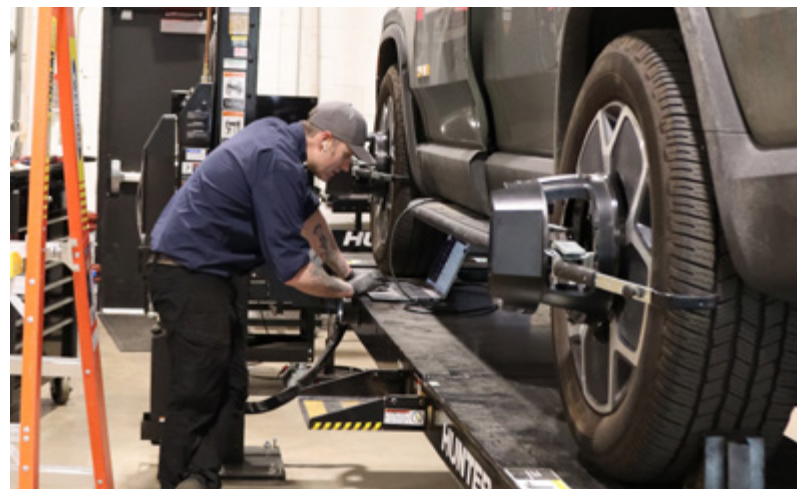
Rivian is an American electric vehicle and technology company focused on designing and building adventure-ready, zero-emission vehicles and the ecosystem that supports them. Founded in 2009 and headquartered in Irvine, California, with its east coast headquarters in Atlanta, Georgia, Rivian develops and manufactures all-electric trucks, SUVs, and commercial vans, anchored by its R1T pickup, R1S SUV, and Electric Delivery Van platforms. These vehicles are currently manufactured at its Normal, Illinois facility. However, they are also in the process of building a second manufacturing facility in Social Circle, Georgia. Rivian's Roswell location is one of the latest in its growing network of service locations from coast to coast, and its second service center in Georgia. Combined with Rivian's growing fleet of mobile service vehicles, drivers can rely on this new location to address their service needs in a timely and efficient manner with the quality they expect from the Rivian brand.

NEW
FACILITY DETAILS
27K SF



2 ACRE
INVENTORY LOT

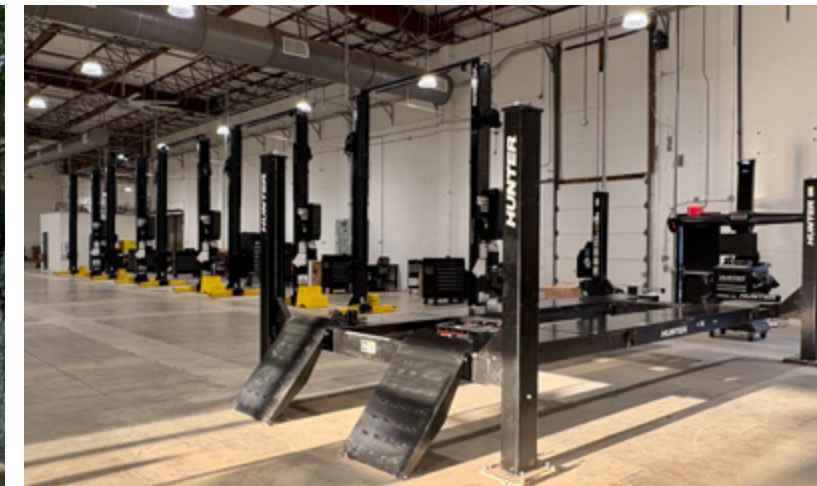
EMPLOYEES
30+



RIVIAN

We're delighted to be growing our Georgia roots here in Roswell, helping us meet the service needs of Rivian owners north of Atlanta. This new location supports our growing nationwide network as we prepare for the launch of R2, and we are grateful to all our local partners for helping us bring this facility to life.

MARSALIE MACKENZIE | RIVIAN FIELD SERVICE DIRECTOR



ROSWELL INC'S INVOLVEMENT

- Recruitment Project
- Assisted with Zoning
- Assisted with Permitting Process
- Provided Support for Opening

Tipsy Thaiger

Tipsy Thaiger is a modern Thai bar and kitchen rooted in the spirit of Thai hospitality—where bold flavors, thoughtful cocktails, and a strong sense of community come together. Founded by Birdie Niyomkun, Phudith Pattharakositkul, and Candi Lee, the concept was born from pop-ups and a desire to bring a more personal, ingredient-driven Thai experience to the neighborhood.

They focus on seasonal ingredients, shareable dishes, and a craft cocktail program inspired by Thai flavors and techniques. Our goal is to create a space that feels both exciting and approachable—where guests can gather, celebrate, and experience Thai cuisine in a new way.

Since opening, Tipsy Thaiger has been recognized by the The Atlanta Journal-Constitution and Rough Draft Atlanta as one of Atlanta’s 10 Best New Restaurants of 2025.

NEW
FACILITY DETAILS
3,790 SF
with 1,400 SF of
outdoor patio space

ESTIMATED
INVESTMENT
\$500K

EMPLOYEES
39

RBT **EP.77**
WATCH VIDEO



Roswell felt like the perfect home for Tipsy Thaiger from the very beginning. The city has a strong sense of community, a growing appreciation for unique culinary experiences, and a genuine support system for small businesses.

Roswell Inc played a key role in helping us navigate the process—from connecting us with local resources to making us feel welcomed as part of the business community. Their support made it possible for us to bring our vision to life in a meaningful way.

We’re proud to be part of Roswell’s evolving food scene and excited to continue growing with the city.

BIRDIE NIYOMKUN | PRODUCT & EXPERIENCE DIRECTOR, TIPSY THAIGER



ROSWELL INC'S INVOLVEMENT

- Recruitment Project
- Assisted with Permitting Process
- Advisor to Both Tenant & Ownership
- Ombudsman Support
- Marketing Support

You42 Studios has set out to build the ultimate creative hub. It's a space where you can record professional content or just have fun with family and friends. The truly unique setting is designed for creating lasting memories with themed sets, state-of-the-art recording spaces, podcast studios, an indoor cityscape, and a green screen room where you can let your imagination run wild.

As a company, You42 has extensive experience in video games, animation, and entertainment. The You42 Platform gives creators a single site where they can upload all of their content (videos, music, podcasts, photos, live streaming events), and monetize their work from day 1. That same creator-focused vision is what they're bringing to life with You42 Studios in Roswell.

To build community around the studio, they've included amenities that go above and beyond. You'll find two restaurants with menus developed by celebrity chef Katsuji Tanabe. AJ's Pizzeria offers Chicago tavern-style pizza. Fine dining is coming soon with the opening of High Horse. They're also opening a coffee shop and a full bar called Big Shots. You can grab a drink before catching a show at their live performance venue, The Block, or host your own event in the multi-purpose ballroom. If you can dream it, you can make it happen at You42 Studios.



What better place to build a community of creators than a vibrant, growing community like Roswell, GA. The city is extremely business forward, and resources like Roswell Inc make it easy to get the word out as we continue to expand our offerings, with everything from creative studios and live performance venues, to restaurants and private event spaces.

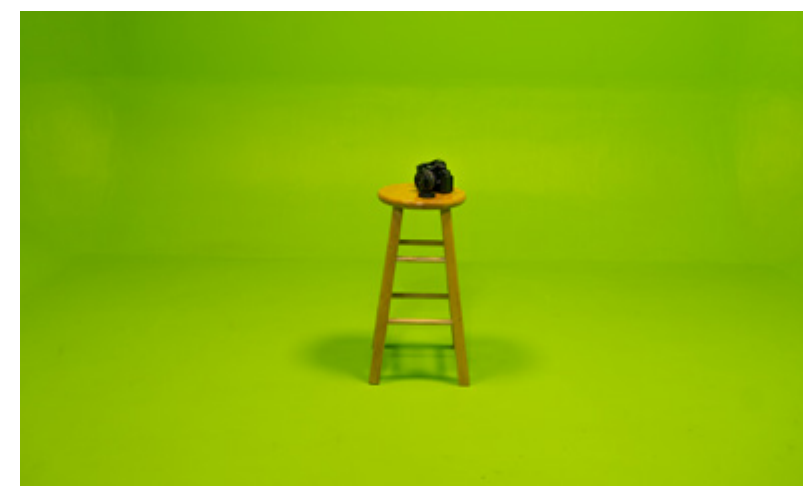
ASHLEY JOHNSON | PRESIDENT, YOU42 STUDIOS

NEW FACILITY DETAILS
36K SF

ESTIMATED INVESTMENT
\$9.6M

UNIQUE FEATURES

- Indoor Cityscape
- 10 Themed Micro-Studios
- Green Screen Room
- Podcast Studios
- Quick Dining: AJ's Pizzeria
- Fine Dining: High Horse (coming soon)
- Full Bar: Big Shots (coming soon)
- Coffee Shop (coming soon)
- Arcade (coming soon)
- Theater Venue (300 person capacity)
- Multi-Purpose Banquet Room for Private Events (625 person capacity)
- Selfie Museum Experience
- Party Packages
- Seasonal Events



ROSWELL INC'S INVOLVEMENT

- Recruitment Project
- Assisted with Permitting Process
- Advisor to Both Tenant & Ownership

Just beyond the energy of Canton Street’s Historic District, Hillrose™ is a place specially designed to feel familiar from day one. Exhibiting up to 75,000 SF of walkable, fully integrated commercial and lifestyle development, Hillrose™ will offer a tailored mix of retail, dining, workspace, and residences designed to delight locals, families, and visitors alike.

In partnership with the City of Roswell, the construction of Hillrose™ is officially underway with anticipated completion by late 2027.

FEATURES

- Six-building connected retail village, centered around an activated greenspace
- 530 surface and structured parking spaces
- Exclusive neighborhood office: 25 Hill (full building) and Station 37 (top floor)
- 143 luxury rental residences and 16 brownstone-style for-sale townhomes
- Seamless pedestrian access to City Hall, Downtown Roswell, and surrounding trails
- Four key access points



Just beyond the charm of Canton Street’s Historic District, Hillrose™ aims to deliver more of what Roswell demands—without crowding what it already has. We are thrilled to deliver this, mixed-use village offering novel, notable retailers, restaurants, services, and residences to Roswell’s residents, visitors, and workforce. Our drive in visioning Hillrose™ was the delivery of seamless connection and room to roam, and we’ve worked hard to scale and detail this guiding ethos through every facet of master planning. Roswell Inc has been a tremendous advocate in garnering early brand awareness for Hillrose™ and facilitating meaningful connections with existing Roswell businesses and entrepreneurs. We’re grateful for their trust and support.

JIM MEYER | MANAGING PARTNER, THE ATLANTIC COMPANIES



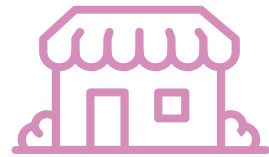
Headquartered in Atlanta and privately held, The Atlantic Companies provides full-service development, acquisition, and leasing and property management for income-producing assets owned by our principals and investment partners throughout the Southeast. Founded by Jim Meyer and Mack Reese in 1995, The Atlantic Companies has overseen the development of \$6B of institutional quality properties totaling over 12 million square feet of mixed-use, residential, office, and light industrial.



ROSWELL INC'S INVOLVEMENT

- Recruitment Project
- Assisted with Permitting Process
- Provided Office & Retail Tenant Prospects
- Assisted with Government Affairs

Roswell Inc's business retention and expansion staff worked with numerous local Roswell businesses in 2025 to make sure they have the tools and resources they need to succeed and grow. Depending on the company, this can mean a variety of things, from assisting with location and consumer analysis to helping a business find a new, larger location when it comes time to expand.



Retention & Expansion

46 supported **15** completed **27** ongoing



Gate City | Blended Family Spirits



High Meadows School | New Academic Building



La Quinta Roswell | \$4.5M Renovations



Gate City Brewing Company was founded by Pat Rains and Brian Borngesser, who met through the Roswell Rotary Club and bonded over a shared passion for homebrewing. What started as brewing sessions and big ideas turned into reality in 2015, when Gate City opened as Roswell's first craft brewery and quickly became a local staple.

TIMELINE

2015 — LAUNCH

- Opened Gate City Brewing in Roswell
- 6,300 SF original space
- First craft brewery in Roswell

2016 — EXPANSION

- Added main taproom
- +3,000 SF indoor space
- Large outdoor courtyard introduced

2017 — SCALING UP

- Opened the Backhouse for events + retail
- Installed canning line + statewide distribution
- Named 21st fastest-growing brewery in the U.S.

2018-2019

- Acquire 3,700 SF of adjacent space
- Launched Blended Family (3,000 SF on Oak Street)

2020 — PIVOT

- COVID-19 disrupted growth
- Pivoted to producing hand sanitizer
- Focus shifted from expansion to survival

2021 — REBOUND

- Opened The Artillery Room (cocktail lounge)
- Added deck, Canton Street access, and music stage

2022-2023 — REFINEMENT + DISTRIBUTION GROWTH

- Elevated cocktail program (hand-crafted focus)
- Blended Family expanded distribution: Southeast to Midwest
- Partnerships with: Disney Cruise Line, Carnival Cruise Line + Margaritaville at Sea
- Added bottling line

2024 + FORWARD

In 2024, Blended Family Spirits expanded to the West Coast, entering California and Washington, while also opening a retail tasting room in Roswell. The launch of its fifth product, an Espresso Martini, saw strong success across all markets.

To support continued growth, the company acquired and developed a new 9,800 sq ft space—Gate City Headquarters—bringing together offices, production, storage, and event space. This expansion positions both brands for long-term growth while deepening their role as a central gathering place for the community.



6,300 SF Production
3,600 SF Taproom
1,100 SF Backhouse
4,000 SF Courtyard



950 SF Main Lounge
550 SF Loft
400 SF Mezzanine
600 SF Basement



2,000 SF Production
1,000 SF Tasting Room

GATE CITY HEADQUARTERS

3,000 SF Production
5,000 SF Events
1,800 SF Storage
10,000 SF Courtyard




EP.38
WATCH VIDEO



EP.82
WATCH VIDEO


ROSWELL INC'S INVOLVEMENT

- Expansion Project
- Permitting Assistance
- Site Selection Assistance
- Ombudsman Support
- Marketing Support

La Quinta Roswell

NEW FACILITY DETAILS
62K SF

ESTIMATED INVESTMENT
\$4.5M

100
ROOMS



RBT EP.86

WATCH VIDEO



Owned and operated by Pete and Rakhi Patel, the newly renovated La Quinta Inn & Suites Roswell represents a strategic reinvestment into one of North Fulton’s fastest-growing communities. The ownership group acquired the property in June 2024 and began a comprehensive renovation in November 2024, culminating in a grand reopening in November 2025.

This transformation reimagined the property into a modern, design-forward hospitality destination that blends comfort, functionality, and an elevated guest experience. What sets this La Quinta location apart is its focus on creating a peaceful, aesthetically refined environment while maintaining the brand’s signature accessibility and reliability. Whether traveling for business or leisure, guests can expect a welcoming atmosphere and a versatile stay experience designed to meet a variety of needs.

ROSWELL INC’S INVOLVEMENT

- Retention Project
- Assisted with Permitting Process
- Advisor to NEW Ownership
- Ribbon Cutting

High Meadows School

NEW FACILITY DETAILS
6,367 SF
with 1,000 SF of outdoor patio space

ESTIMATED INVESTMENT
\$2.3M

DONORS
117



RBT EP.32

WATCH VIDEO



High Meadows School marked a major milestone in 2025 with the opening of Meadow Hall—its first new academic building in nearly 30 years. The \$2.395 million, 6,367-square-foot facility reflects a forward-looking investment in flexible, student-centered learning. Designed to support hands-on, inquiry-driven education, the space includes adaptable classrooms, collaborative gathering areas, and seamless access to outdoor learning environments—all reinforcing the school’s commitment to environmental stewardship and experiential education.

This project was made possible by a highly successful campaign that surpassed its \$2.3 million goal, fueled by the support of 117 donors. Meadow Hall now serves Middle Years students (Grades 6–8) while also creating space for community connection and school-wide engagement. Its design—guided by a permaculture study—ensures harmony with the surrounding 42-acre campus, including direct access to wetlands and nature-based learning areas.

Looking ahead, Meadow Hall represents more than a new building—it sets the direction for the future of High Meadows. It signals continued growth rooted in sustainability, innovation, and community, while preparing students to think critically, collaborate meaningfully, and engage as responsible stewards of people and the planet.

ROSWELL INC’S INVOLVEMENT

- Expansion Project
- Assisted with Permitting Process
- Advisor to Ownership
- Ribbon Cutting
- Community Support

Grand COMING

CHANDLER RESIDENCES NOW OPEN 678.780.4836

BELOX

BEY MEDITERRANEAN KITCHEN + BAR

WYW WATCH YOUR WRIST

SOUTHERN POST

INDUSTRY SUPPORT

ROSWELL
-2025-
RESTAURANT
WEEKS

an event by
ROSWELL [inc] VISIT
ROSWELL
GEORGIA

CELEBRATING
10 YEARS!

Roswell Restaurant Weeks returned for its 10th year from January 23 – February 8, 2025. The food-focused promotion and business driver spans over two weeks and supports the local restaurants through a traditionally slower period of patronage. Roswell Restaurant Weeks is held in partnership by sister organizations Roswell Inc and Visit Roswell.

With over 50 participating restaurants, Roswell Restaurant Weeks 2025 was the largest in the Atlanta Metro area. During the multi-week event, all participating restaurants served individual prix fixe menus featuring signature favorites and original specialties. Each year's restaurants feature Roswell staples and newcomers alike, which makes it the perfect time to hit your favorites and also try something new.



Zest



Grana



Bask Steakhouse



Whit's Frozen Custard



North End Kitchen



Chelo

RBT EP.76

WATCH VIDEO



33K
WEBPAGE VIEWS



16,000+
unique visitors



7,750+
Instagram followers
@roswelleatsandsips



Summer Sippin' Award Ceremony



Hugo's Oyster Bar | 1st Place Cocktail
Mi Amango



Mashawi Mediterranean | 1st Place Non-Alcoholic
Lemon Mint Drink



SIPPIN' 10 YEARS STRONG!

The 10th Annual Summer Sippin' competition has come to a close and it's time to announce the winners of the 'Best Sip in Roswell'. This year, Summer Sippin' took place June 17 - August 19. During the two-month competition, 61 establishments participated by creating a new summer inspired drink.

The 'Best Sip in Roswell,' has two winners, one for the cocktail category and one for the non-alcoholic beverage category. Hugo's Oyster Bar takes first place in the cocktail category with Mi Amango and Mashawi comes in first place in the non-alcoholic beverage category with their Lemon Mint drink.

Restaurants, coffee shops, breweries and tasting rooms all around Roswell created a new specialty drink for Summer Sippin'. Each establishment promoted their drink throughout the competition this summer to customers and encouraged voting via SummerSippin.com or on the Summer Sippin' app. Votes were tallied throughout the competition so each participating location knew how their drink ranked. With a combined total of over 25,000 views on the website and app and 1,519 votes cast overall, the winners were decided.



**1,519 TOTAL
SIP RATINGS**

EP.70

WATCH VIDEO



16,431
website views



9,500+
app views

Economic Development Forecast

An annual breakfast event an exclusive event for business leaders and community stakeholders, sponsored by Synovus Bank. Synovus' Cal Evans provided insights into the latest economic, commercial real estate, and industry trends affecting Roswell. His expertise offers crucial perspectives for anyone invested in our community's future.

Brokers Luncheon

A luncheon event for our region's commercial brokers and agents, sponsored by True North 400—North Fulton's community improvement district (CID). This annual luncheon provides a valuable discussion on the latest developments in Roswell, an opportunity to connect with peers and a firsthand look at what's happening in our community. Our president & CEO, Steve Stroud, gave an update on economic development in Roswell, and Kristin Winzeler, Executive Director of True North 400, provided an update on CID projects as well as some insight into GA-400 and MARTA projects.

Site Selection Tools



Small- and Mid-Size Properties Tool by REsimplifi

Visitors can view all available property types including industrial, retail, office, multifamily, and land sites. Listings are compiled from various commercial real estate sites or can be added directly by the broker. All listings are actively managed by REsimplifi's research analysts. With a REsimplifi membership, brokers can also share transaction details and access parcel data.



Large Properties Tool by Georgia Power

Through this platform, you can view available office buildings, industrial buildings, and land sites. Additionally, you can create county and demographic reports and view optional map layers such as transportation, environmental areas, and incentive zones.

SCAN QR CODE TO
Access
Site Selection
Tools



2025 Brokers Luncheon | Hosted at Southern Post / Grana



2025 Economic Development Forecast



2025 Brokers Luncheon



2025 Economic Development Forecast | Hosted at Southern Post



Roswell Inc's Nonprofit Leadership Academy is a six-part course sponsored by Ameris Bank, with continued partnership from Carolyn Salvador of Momentum One. It is designed to help organizations strengthen leadership, address strategic challenges, and build a strong foundation for future growth.

43 EPISODES

145.2K VIEWS

TOP EPISODE
Gracious Plenty
with over 10,000 views



WATCH ON
YOUTUBE



WATCH VIDEO 
EP 31 | Full Tilt Consulting



WATCH VIDEO 
EP 44 | Walk Your Plans

Strong partnerships are the key to any successful economic development program. Roswell Inc is proud to work alongside a variety of local, regional and state agencies.



PARTNERS



Launched in 2016, Roswell Inc's Economic Development Alliance (EDA) is comprised of key stakeholders invited from the Roswell business community who are committed to investing in the economic growth and prosperity of the city.

The group includes representatives from the city's largest employers, key regional businesses, economic development agencies and real estate development companies.

2026 Participating Companies



Legacy IncVestors



Transformative IncVestor



Growth IncVestor



Innovative IncVestor



Collaborator IncVestor

- Atlanta Gas Light
- Atlantic Companies
- Full Tilt Consulting
- Gate City Brewing
- Mighty Dog Roofing
- Nexus Coworking
- Rearden Wyatt CRE
- Smith + Howard
- Visit Roswell
- Williams Business Law
- Macke Dental
- RO Hospitality
- Insperty
- Brown & Co Jewelers
- Fellowship Christian School
- Home2 Suites
- SugarOak Management Services
- Technipower

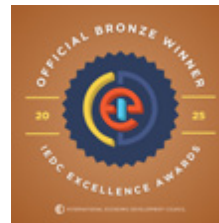
IncVestors make up the core of Roswell Inc's private financial support and are essential to helping Roswell Inc continue to build a successful and sustainable economy, ensuring Roswell remains a premier city for business investment and growth. These companies are committed to driving strong economic development in Roswell and regularly participate in events throughout the year focused on topics of interest and building business connections.

Excellence in Economic Development

Roswell Inc Wins Four Excellence in Economic Development Awards, Most in Georgia, from the International Economic Development Council. Becomes the first economic development organization in Georgia to ever receive the prestigious EDO of the Year honor, setting a new benchmark for impact and innovation statewide.

Roswell Inc has received four awards recognizing Excellence in Economic Development at the 2025 International Economic Development Council (IEDC) Awards, making it the most-awarded economic development organization in Georgia this year. Among the honors, Roswell Inc was named Economic Development Organization of the Year - becoming the first EDO in Georgia to ever receive this prestigious national recognition.

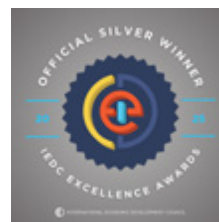
IEDC's annual Excellence Awards honor economic development organizations, government entities, initiatives, and programs that demonstrate consistent, exemplary performance in the profession. Roswell Inc's honors showcase its pivotal role in driving economic development and community engagement within Roswell, Georgia. Among its recognitions, the bronze award for Economic Development Organization of the Year - the most prestigious honor of the annual awards program - underscores Roswell Inc's leadership and impact. Other awards include:



BRONZE
Economic Development Organization of the Year



GOLD
Roswell Inc's Annual Impact Report
GOLD
Reuse and Redevelopment Project, Southern Post



SILVER
Digital Media, Roswell Brew Talks Podcast



Key highlights from Roswell Inc's award-winning initiatives include:

- Economic Development Organization of the Year:** Recognized for its high-impact approach to economic development, Roswell Inc leverages a small, agile team to deliver personalized support to businesses of all sizes, build enduring relationships across sectors, and implement strategic programming that drives growth, innovation, and long-term community prosperity.
- Annual Impact Report:** After not placing in 2024, Roswell Inc's updated report won Gold in 2025, underscoring a commitment to continuous improvement and transparent storytelling.
- Roswell Brew Talks Podcast:** Launched in partnership with Visit Roswell, the podcast has gained significant traction since its debut, surpassing 200,000 views to date, expanding to all major streaming platforms, and continuing to highlight local businesses while fostering stronger community engagement.
- Southern Post Redevelopment Project:** Recognized for its \$174 million economic impact - encompassing direct, indirect, and induced contributions - this project exemplifies a collaborative approach with developers and state partners to ensure meaningful community benefits.



ROSWELL [inc] | Accredited
Economic
Development
Organization

visit roswellinc.org

